



## **NORTH CAROLINA**

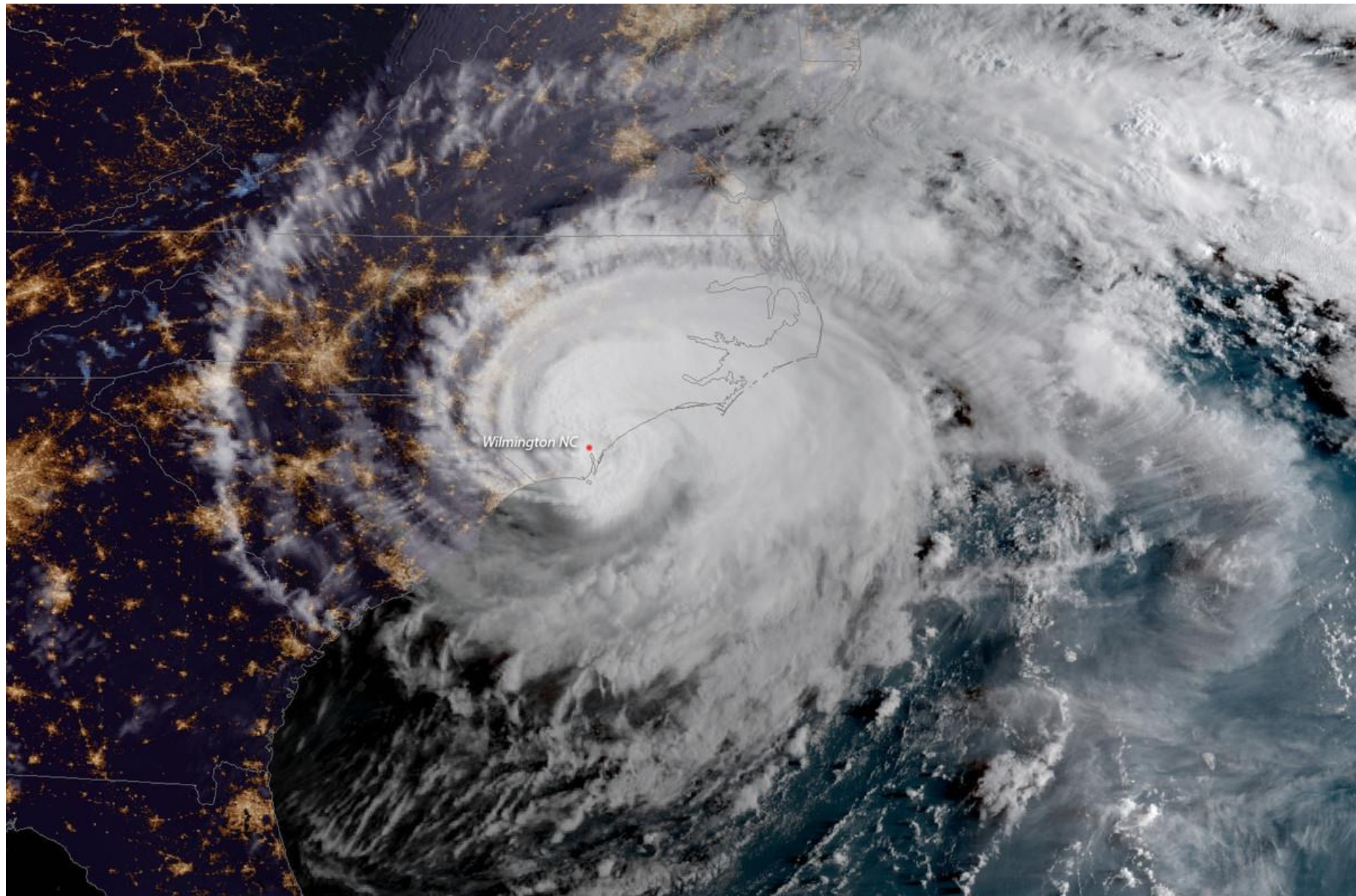
Department of Transportation



# **NCDOT Hurricane Florence Division 3**

Karen Collette, PE – Division 3 Engineer

10/3/2018

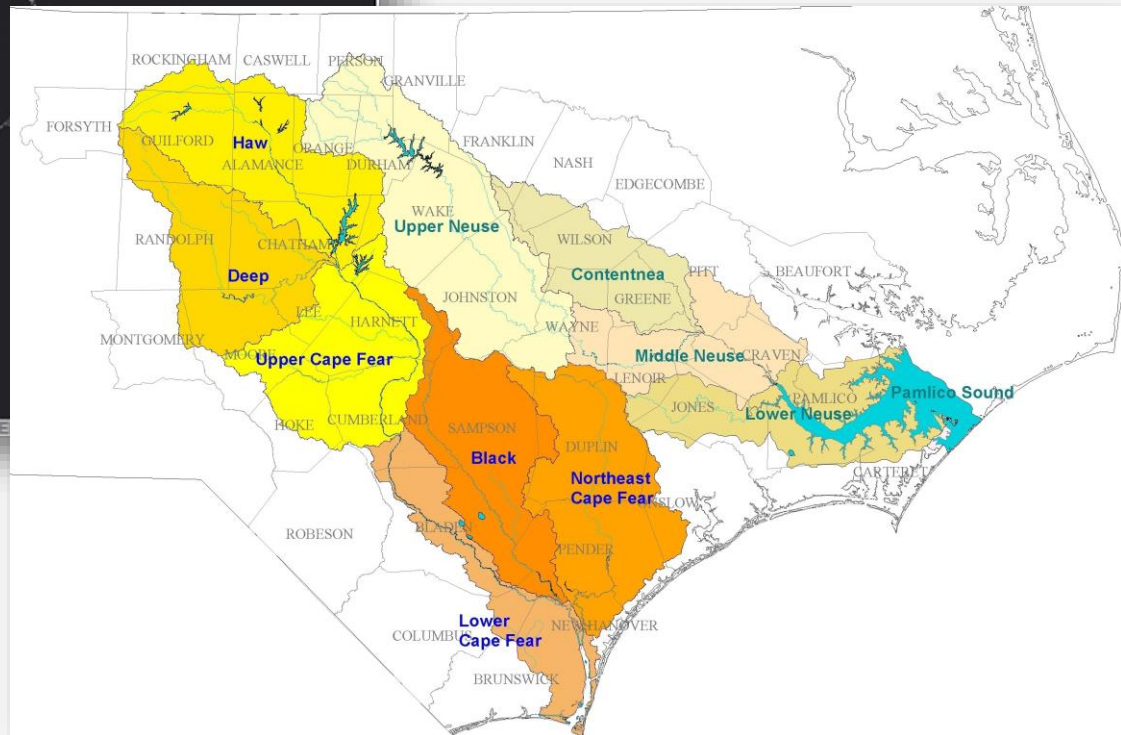
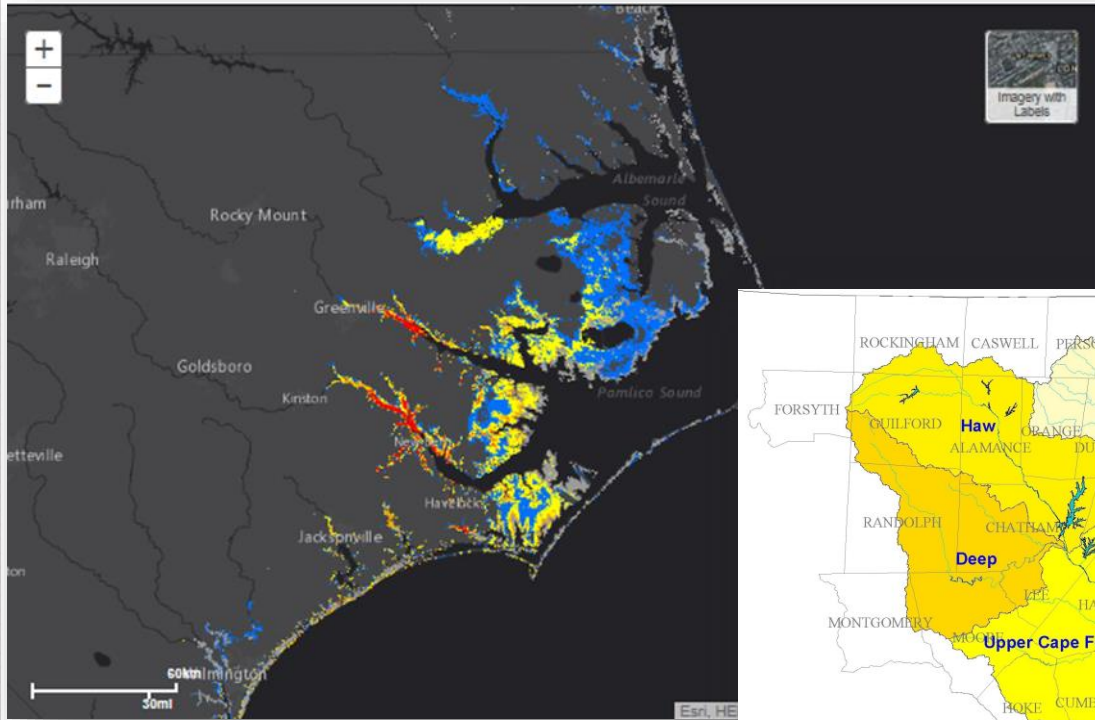


# Lessons Learned

- Record flooding compared to storms past storms
- Rapidly changing conditions (Brunswick)
- Best repair methods (Flowable Fill)
- Importance of coordination between all emergency response agencies, towns, municipalities, utilities
- Employee Dedication



# River Basin Flooding – Storm Surge



# Unprecedented Flooding





# Black River

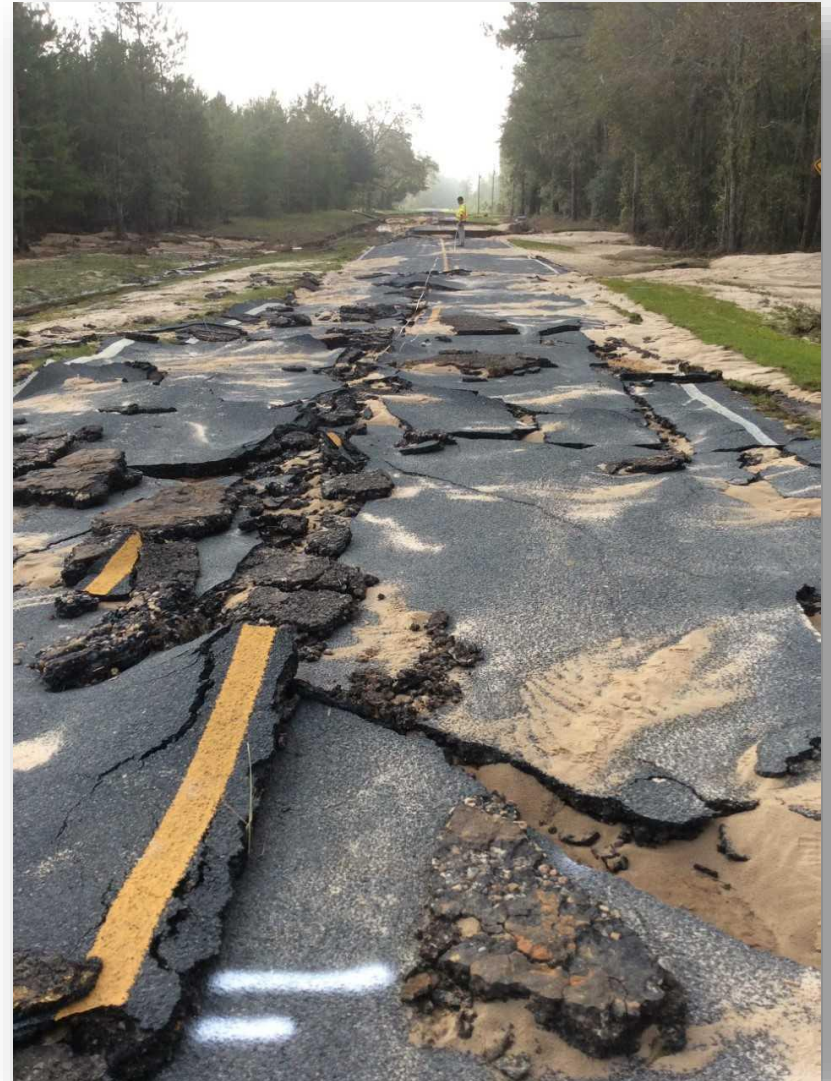
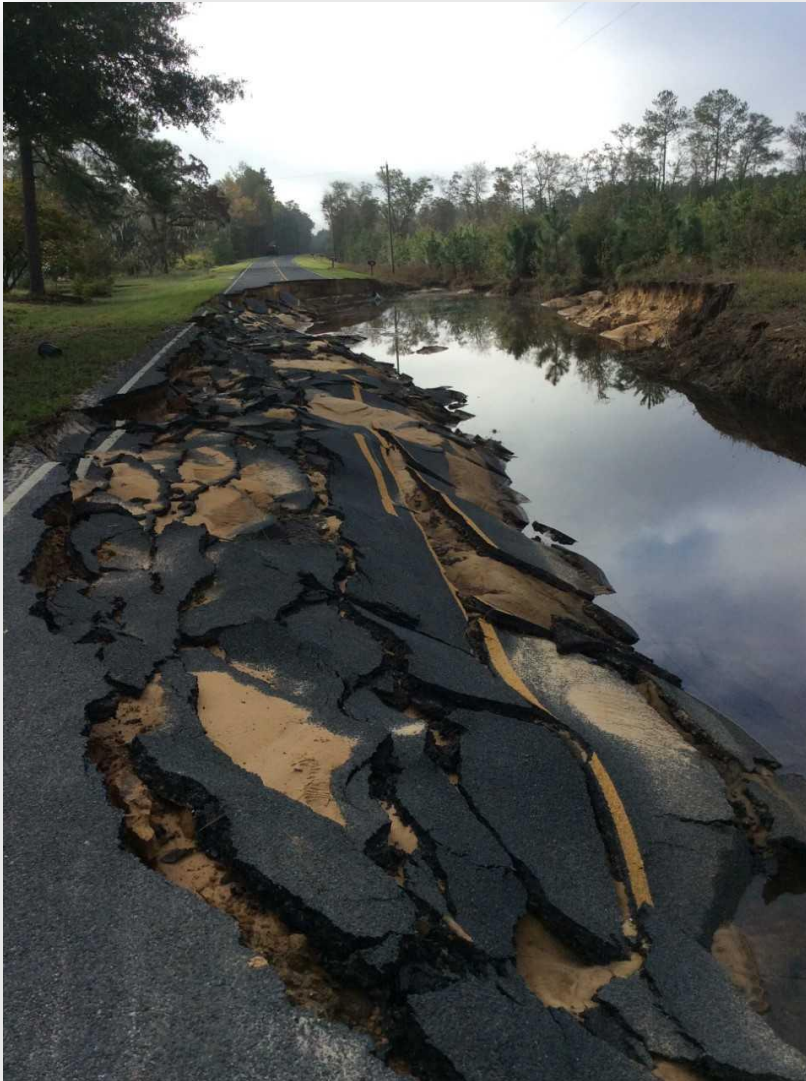


# I-40





# White Oak Rd.





# US-421



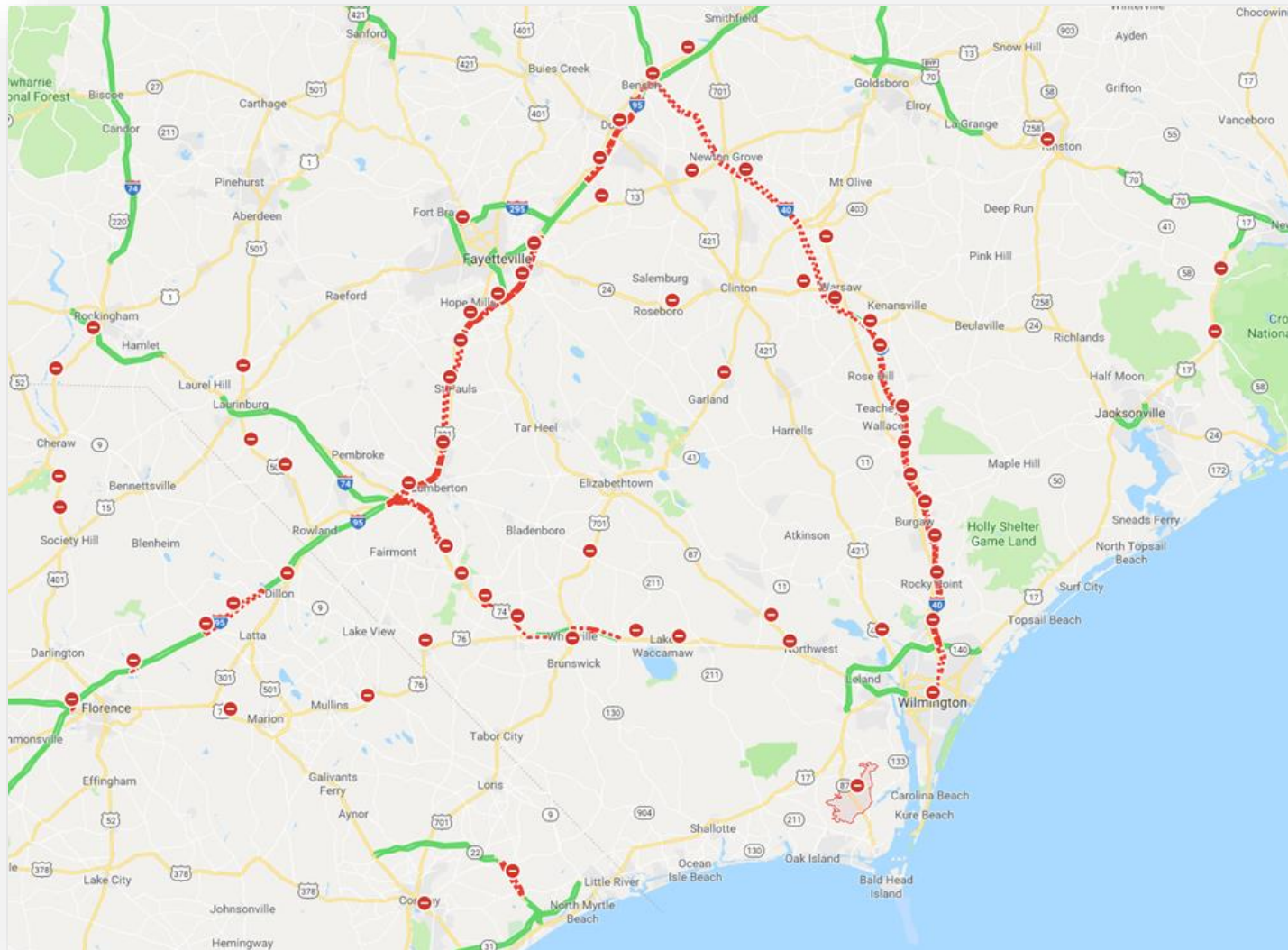


# US- 421





# Brunswick County “Cut Off”





# Challenge: Getting Recovery Crews In





# Flowable Fill





# Multi Agency Coordination

## County Government





# Multi Agency Coordination

- North Carolina Highway Patrol
- North Carolina National Guard
- Local Law Enforcement, Fire, Rescue, EMS
- North Carolina Emergency Management



# Employee Dedication





# Questions?